

# HOBBY FARM & VINTAGE COLLECTIBLES AUCTION



**Saturday, June 29, 2024 – 9:00 a.m.**

**Located at: 600 Riverside Ave S, Sartell, MN**  
(Hwy 15 to Riverside Ave, North 1 mile)

## COLLECTIBLE VEHICLES

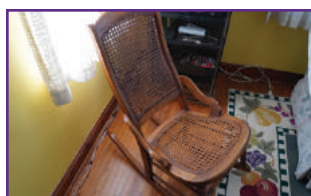
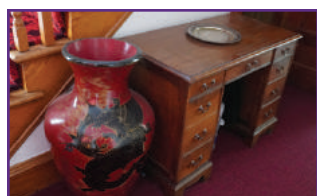
- Ford F-600 Grain Truck
- '77 Chrysler Town & Country New Yorker
- '64 Cadillac Sedan DeVille (4 door)
- '61 Corvair 700 w/46XXX miles (One-owner)
- '64 Plymouth Barracuda (No Title)
- '46 Willy Jeep
- '70s Suzuki 400 Dirt Bike (No Title)

## YARD AND GARDEN ITEMS

- 8' x 16' Storage shed to be moved
- John Deere SX95 rear engine mower
- Lots of kids and adult bikes, some very old
- Unused steel "T" fence posts
- Concrete picnic table and concrete deer
- Shovels, rakes, and garden tools
- 2) Fiberglass portable restrooms

## HOUSEHOLD AND FURNITURE ITEMS

- Vintage Fisher stereo, JBL Super Shell speakers
- Oak pedestal table and chairs
- Full-size leather couch
- 50's Dinette table and chairs
- Full-size bedroom set
- Bunk bed set, dressers and chests
- Vanity with mirror and bench
- Mission Oak style table/desk
- 2) Flower love seats, small tables
- China Hutch / 2) Wicker rocking chairs
- Desk, Square table w/turned leg



## COLLECTIBLE ITEMS

- Two-seater buggy w/sleigh runners
- Cushman Titan 24V Electric Transport
- Rupp SnoSport 370 w/Sachs Engine and extra new track
- Wood and Gas combo cook stove
- John Deere 24T square Baler and 14T for parts
- John Deere Sulky Plow / old cement mixer
- McCormick-Deering Grain Drill
- Old MM pull-type combine
- Horse-drawn mower and corn planter
- Grove machinery, disks, hay rakes
- Standing Windmill (buyer to take down)
- 1904 Bank safe with crank lock
- Large double-door floor safe
- Floor safe w/combo
- Large Oriental 30" tall vase
- St. John's oak student desk
- Cast cook stove w/bread warmers
- 2) Blacksmith line shafts
- Round metal frameless corn crib
- Post drill press / 2) wooden chicken crates
- Leather sewing machine
- Cream separator / Copper boiler and lid
- City Service bulk oil tanks
- City Service oil can display
- Unused wood lathe with chisels
- Several flat and dome-top steamer trunks
- Coca-Cola cooler and Bottle machine
- Blanks for wood wagon wheels/molds
- Several Crocks - 40, 20, and 4 gal Birch Leaf
- Red and white enamelware / Granite coffee pot
- Old Gas and Oil tins, metal pails, signs
- Leinenkugel's metal wall sign
- Grain Belt beer sign
- Cross cut and Buck saws
- Lots of primitive tools
- 2) Tractor-mounted saw rigs
- Wood burning stoves
- 2) Metal Cupolas from barns
- 2) Row boats (one is cedar-lined)

## Auctioneer's Note:

After many years of collecting and saving unique items, David and Linda are selling the family homestead. It is our honor to assist in selling this collection and please believe that there are many unlisted items. We will be selling in two rings, so please plan to spend the day with us. Parking will be off Riverside Ave in the North field. Please join us for this vintage auction.

—The Black Diamond Auctions Team

**David and Linda Shay, Owners**

Any and all announcements made on the day of the auction supersede all printed auction marketing materials.



For more information or to view many more photos online:

**BlackDiamondAuctions.com**

**320.241.1200**



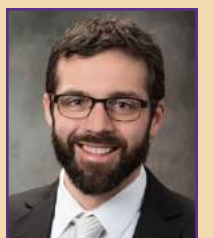
Col. Frank Imholte  
Lic. 73-05-003



Col. Keith Sharer  
Lic. 73-05-002



Col. Joseph Imholte  
Lic. 73-05-032



Col. Michael Imholte  
Lic. 73-05